

SERVICE ET MANUFACTURE DE LUNETTES

L'INGÉNIEUR CHEVALLIER
1740

FROM PRECISION INSTRUMENTS...
TO CUSTOM-MADE READY-TO-WEAR

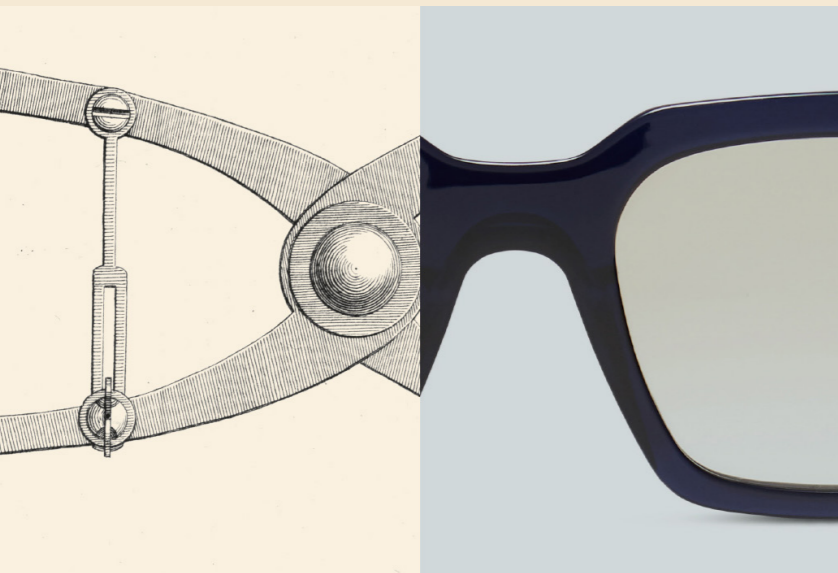


*“A serious optician is not a merchant. He is a technician,
an advisor, a craftsman rather than a shop keeper.
The value of his technique, his advice, and his skill are
to be examined concurrently with his prices.”*

L'INGÉNIEUR CHEVALLIER
Lunetier de qualité (1950)

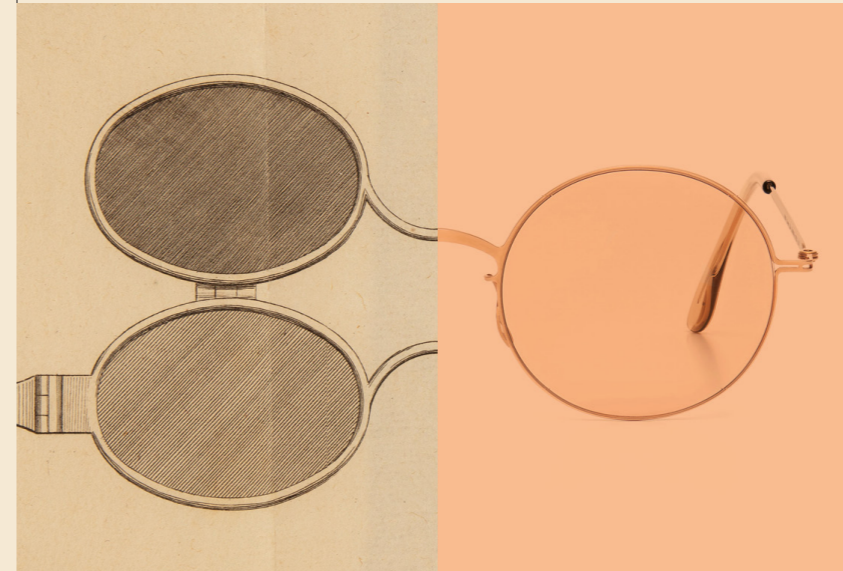
THE EASE
OF READY-TO-WEAR,
THE LUXURY
OF CUSTOM-MADE

L'Ingénieur Chevallier proudly asserts its commitment to excellence, not only in the selection of frames, but also in its professionalism and high standards in terms of service.



PERMANENT
COLLECTIONS

L'Ingénieur Chevallier offers a selection of entirely handmade frames, sometimes edited in limited series and regularly renewed. Some exclusive L'Ingénieur Chevallier-stamped models are produced in our workshops in Paris.

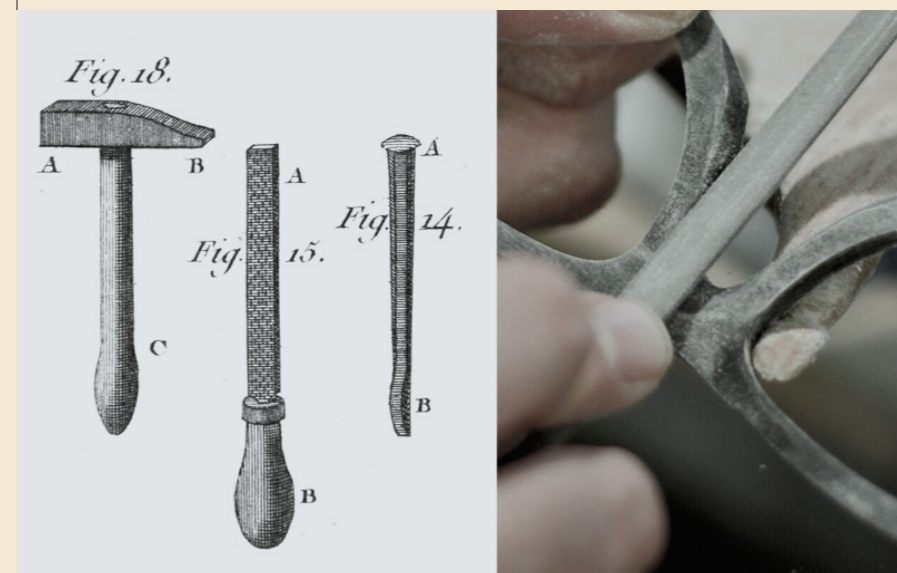


EXCLUSIVE
MINI-SERIES

Made by the finest craftsmen in the world in collaboration with L'Ingénieur Chevallier, certain frames are available in ultra-limited quantities in an effort to offer our customers unique pieces that cannot be found anywhere else but in our boutiques.

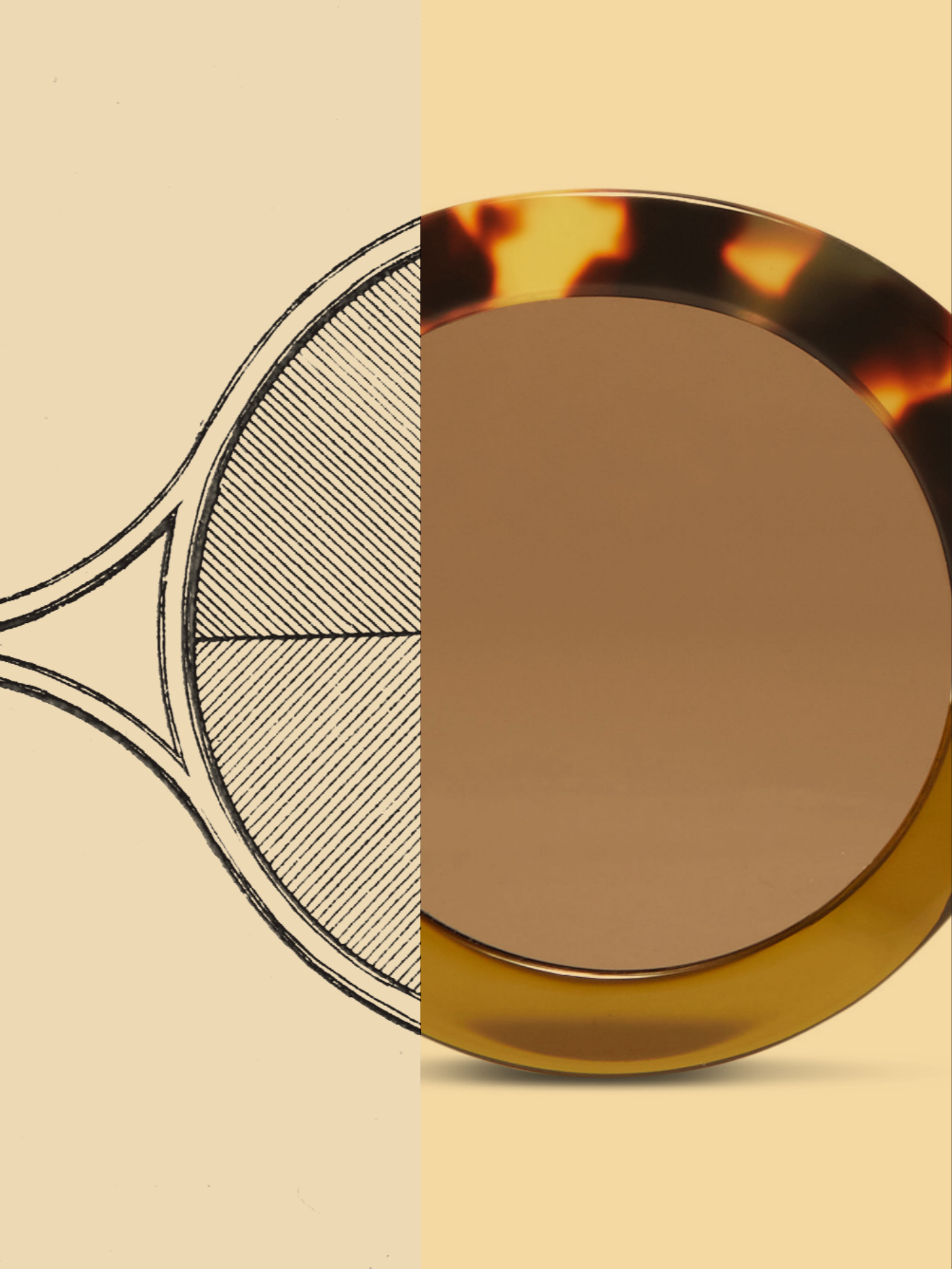
Our team of passionate professionals, trained in the Bonnet family's workshops, takes all the time necessary to ensure optimum comfort. Each pair of glasses is adjusted by taking into account the morphological specificities of its owner: the distance between the lens and the eye, adjustments of the inclinations and curves of the temples, the fit of the nose... a number of points that will surprise many.

MORPHOLOGICAL
FITTING



AFTER

Servicing or repairs? Throughout the life of the spectacles, there will always be an Ingénieur at your disposal to repair, re-adjust, repolish, etc.



IN SEARCH OF THE UNIQUE



Selecting the most beautiful frames
in the world and showcasing them:
as conceived by L'Ingénieur Chevallier,
becomes almost an art!

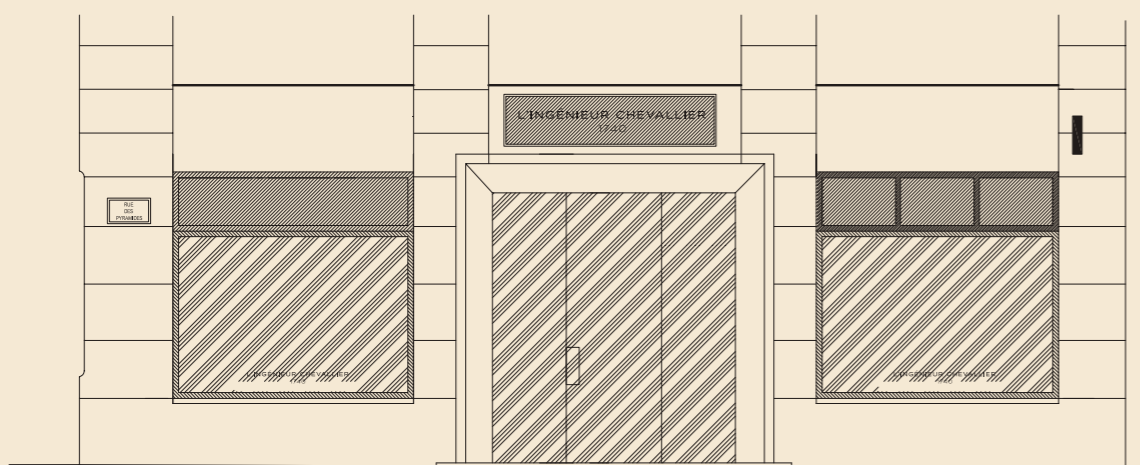
Solid gold, silver, titanium, horn, bio-acetate...

We have gone to the four corners of the world to find the best craftsmen, far from standardized factories. We have chosen human-sized manufactures **where the machine will never replace the gesture of the hand**. The industry is already saturated, our job therefore is to make sure that each pair of glasses is a subject.

We have scoured a great many collections **in search of the rare pearl, the perfect design**, innovative, funky, traditional or sexy. We have forged links with exceptional designers, passionate, committed, and respectful of their know-how and the world they live in.

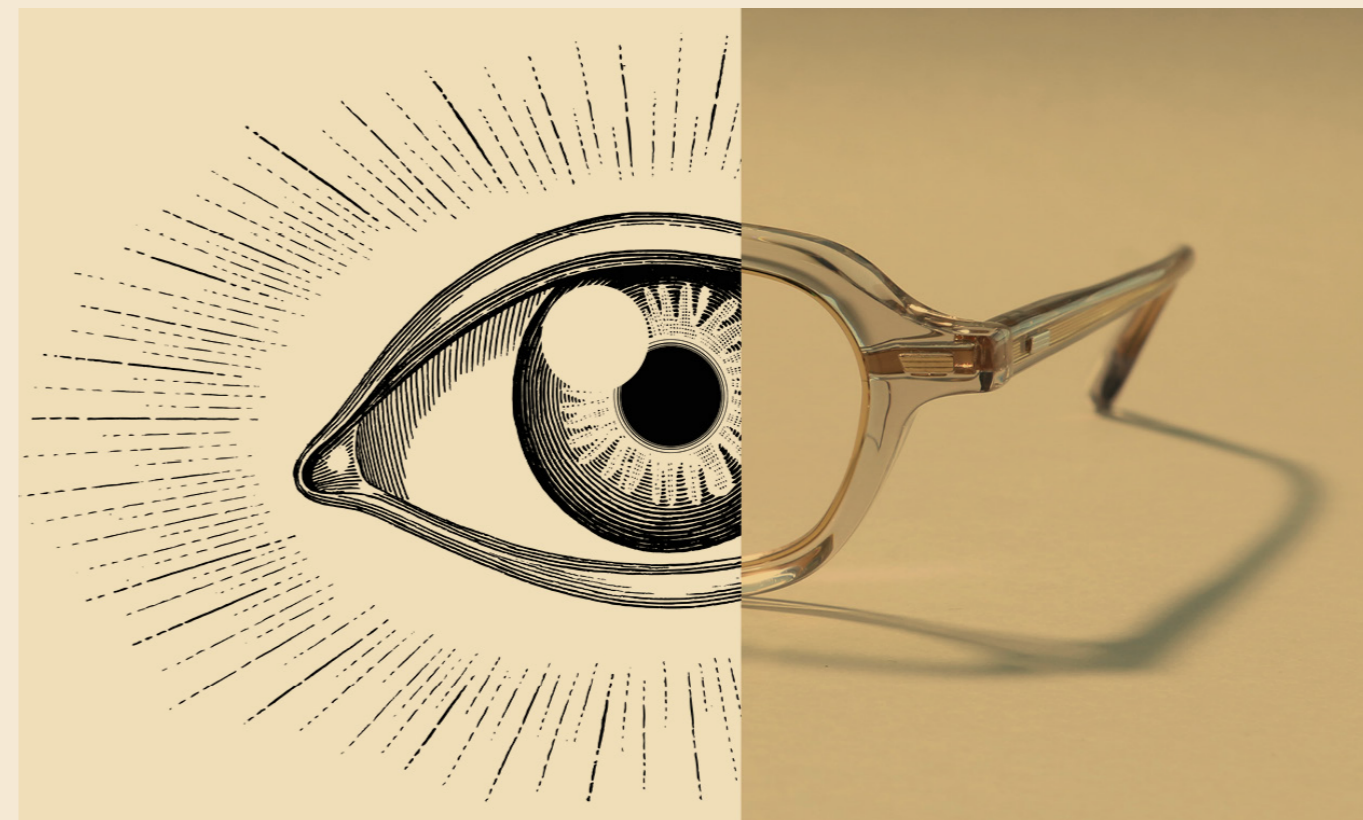
We are modern optician-eyewear makers, concerned with **combining respect for the past and the demands of the future**. Our profession is evolving and our tools are increasingly high-performance: L'Ingénieur Chevallier offers both **the best craftsmanship and contemporary technologies**.

A MODERN CONCEPT IN A HISTORIC BOUTIQUE



L'Ingénieur Chevallier is no longer, long live L'Ingénieur Chevallier! To give new life to the oldest eyewear manufacturer in Paris, that is the gamble made by the Bonnet family in taking over L'Ingénieur Chevallier.

The space has been completely redesigned, thanks to the talent of designer **Pierre Bonnefille**, a *Maitre d'Art* who brought a singular and poetic approach. In the new boutique on the rue des Pyramides, lighting, stone, wood, leather, brushed steel, and mineral nuances create an atmosphere that is far from youth-oriented or museum-like. In order not to disrupt the selection protocol, the frames are hidden from view in drawer cabinets decorated with patinated tulle prints.

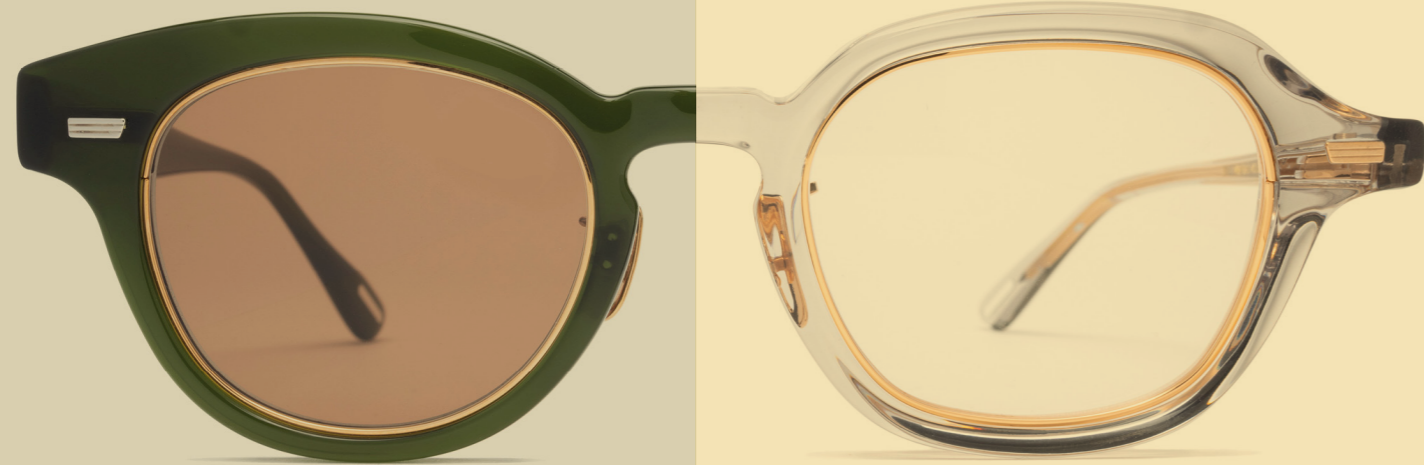


*Choosing a pair
of eyeglasses
is now unlike
any other
experience...*

Committed to remaining true to its reputation, L'Ingénieur Chevallier uses the **latest generation of optometry instruments**, and it stands out for elegant frame collections, free of designer labels or logos. A team trained in bespoke practices assists each client in finding their pair.

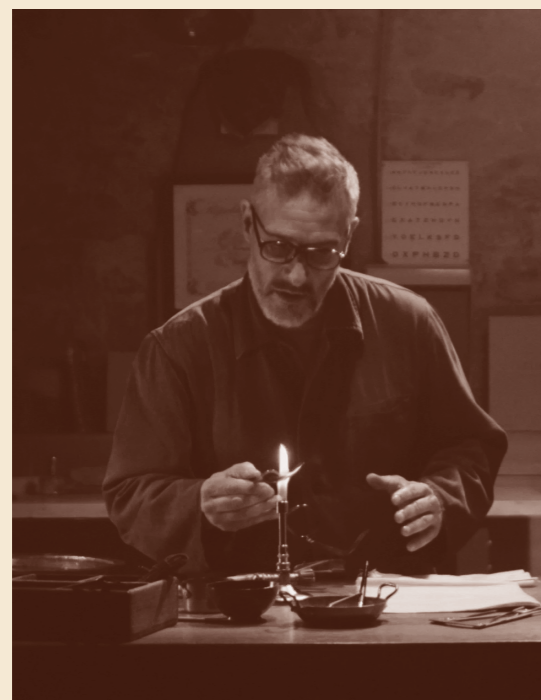
Therefore, all our pieces combine the precision of technology with the skill of the hand... Offering frames handcrafted in very small series by exceptional artisans, choosing the best-performing and most suitable lenses for each client, and ensuring that the object be perfectly adjusted to its owner's face: L'Ingénieur Chevallier brings together the best of both worlds and **invents custom-made ready-to-wear**.

L'INGÉNIEUR'S
SELECTION



BECAUSE
IT WAS PIERRE,
BECAUSE
IT WAS FRANCK...

FRANCK BONNET



These two were made for each other. The same passion for the best-looking eyewear, the same respect for the ancestral gestures of unique know-how, and the same will to never compromise on quality - Pierre Golendorf and Franck Bonnet found each other. Their meeting was not accidental: since childhood, Franck Bonnet, head of Maison Bonnet, had admired the legendary boutique on the rue des Pyramides. As for Pierre Golendorf, when he decided to sell L'Ingénieur Chevallier he refused to give in to the sirens of large groups and foreign investors. He preferred a man of the trade, a committed craftsman in whom he sensed a profound desire to perpetuate a tradition of exceptional eyewear manufacturers. The meeting of the old and new owners of L'Ingénieur Chevallier.



PIERRE GOLENDORF

**FRANCK BONNET,
why did you choose
L'Ingénieur Chevallier?**

When I was a kid and I used to go to the shop with my father to deliver glasses, I was fascinated by the ivory and tortoiseshell binoculars and the silver guilloché lorgnons in the showcases. And those beautiful frames, what memories... I never would have imagined one day saying «This is my place».

Also, there is a gap to be filled between the full bespoke of Maison Bonnet and what you can find on any street corner. With L'Ingénieur Chevallier we are applying bespoke rituals to ready-to-wear in order to offer the perfect ergonomics to which every eyeglass wearer is entitled.

**FRANCK BONNET,
how do you see the new life of
L'Ingénieur Chevallier?**

As passionate curators, we go to the four corners of the world to find our frames, in the best workshops, the most competent in their speciality – whether it's horn, gold, silver or acetate – and we have our lenses made by the best optics manufacturers. In the boutique, our glasses are adjusted by les Ingénieurs trained in our workshops, according to the specificities of each face. The same as with custom-made frames!

**PIERRE GOLENDORF,
why did you choose
Franck Bonnet?**

Have you seen his look? Simple chore jacket, small pair of round glasses, always smiling, relaxed... I liked that! Besides, who doesn't know his family's reputation? For me, it's the only house intimately linked to Art...

The Bonnets correspond exactly to what I was looking for: the best in terms of craftsmanship and the most professional in the optical field. For me, there is no other eyewear maker that can match L'Ingénieur.

**PIERRE GOLENDORF,
how do you imagine the new
Ingénieur Chevallier?**

I don't have to imagine it. I have been a custodian; Franck is a visionary, I know L'Ingénieur is on its way to a renaissance. The spirit will be the same, handmade frames in beautiful materials and a passionate team of professionals. I was looking for that know-how that's so particular, for that state of mind too. I wanted my successor to be able to transmit a real art of living, to understand, respect, and make the brand evolve. When you love beautiful things, you seek out fine establishments. I could think of no others than the Bonnets to perpetuate a profession that I have practiced with passion for over thirty years. It's up to them now!

THE OLDEST OPTICIAN IN PARIS: A LITTLE HISTORY



Gabriel Augustin Chevallier's grandfather, the first optician in Paris, is set up in the Tour de l'Horloge du Palais by the King himself.



L'Ingénieur Chevallier publishes Le conservateur de la vue, which remains a reference book. In appendix, he adds the catalog of the optical objects sold in the store.



Jean Gabriel Augustin Chevallier's great rival, his namesake Charles Chevalier, designs Nicéphore Niepce's first photographic camera.



L'Ingénieur Chevallier's efforts to improve his optical devices are judged "worthy of praise" by the Academy of Sciences, and he is awarded another bronze medal.

1740

1810

1825

1834



With the invention of the solar microscope, l'Ingénieur Chevallier is once again rewarded with a gold medal from the Academy of Sciences.



L'Ingénieur Chevallier transforms the opera monocular into opera glasses. Mother-of-pearl, ivory, tortoiseshell: nothing is too good for this theater accessory the luxury of which is equaled only by its elegance.



The Avizard brothers put an end to years of rivalry and merge the two best opticians in Paris, l'Ingénieur Chevallier and La Providence Chevalier. The new store sets up shop on the right bank.

1847

1878

1901

1807

Jean Gabriel Augustin Chevallier invents the microscope. He supplies optical equipment to astronomers, mathematicians, engineers, and some of the greatest scientists.



1823

Among the numerous gold medals awarded him by the Academy of Sciences, L'Ingénieur Chevallier receives one for his achromatic lens.



1827

L'Ingénieur Chevallier, official optician to the King, is awarded a bronze medal by the Academy of Sciences for several of his optical and measurement instruments including the thermometer and the barometer.



1838

Using the two achromatic lenses purchased from the Chevaliers, Daguerre makes «Boulevard du Temple», the first photograph of a human being, immortalizing a shoeshine boy and his customer.



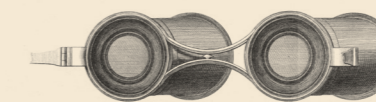
1863

L'Ingénieur Chevallier designs the opera monocular, which becomes all the rage among regulars of the finest Parisian venues.



1891

L'Ingénieur Chevallier becomes the official optician of the Army and Navy. He supplies them with optical and precision instruments, «binoculars, compasses, sextants, and other instruments», as indicated in the Almanach du Commerce et de l'Industrie.



2021

L'Ingénieur Chevallier chooses the Bonnet family to write the next chapter of its history. It is heir to a long tradition of French Art Craftsmen, elevated to the rank of "Maître d'Art" by the Ministry of Culture, labeled a Living Heritage Company, and specializing in bespoke eyewear made of genuine tortoiseshell. The Bonnet family accepts to take over L'Ingénieur Chevallier with the determination to restore its former prestige.



THE NEW INGÉNIEURS



**VICTOR
GROS**
Manager Paris Pyramides

Born in a family of Jura opticians, Victor Gros has been passionate about the creative and technical world of eyewear since childhood. After specialized studies and earning a degree in optometry, he moved to the United States, where he distributed prestigious French brands. With over 15 years of experience, he now brings his expertise to the optical division of L'Ingénieur Chevallier, aiming to offer each client a unique experience that blends impeccable style, comfort, and unparalleled visual performance.

**MATTHIEU
MAITRE**
Spectacle maker / optician

At the age of 16, Matthieu Maitre already knew that he would choose the art professions. Jewellery, watchmaking? He hesitated and discovered eyewear: it was a revelation. Very quickly, his creations hit the bull's eye. They opened the doors of a passionate spectacle-maker who entrusted him with the responsibility of made-to-measure and passed on to him the demand for excellence. Trained in the Bonnet family workshops, he finally realised his dream of becoming a craftsman. Today, Matthieu Maitre wants to bring his creativity to L'Ingénieur Chevallier, his experience of faces and his expertise to develop made-to-measure ready-to-wear.

**MÉLINE
BONNET**
Apprentice

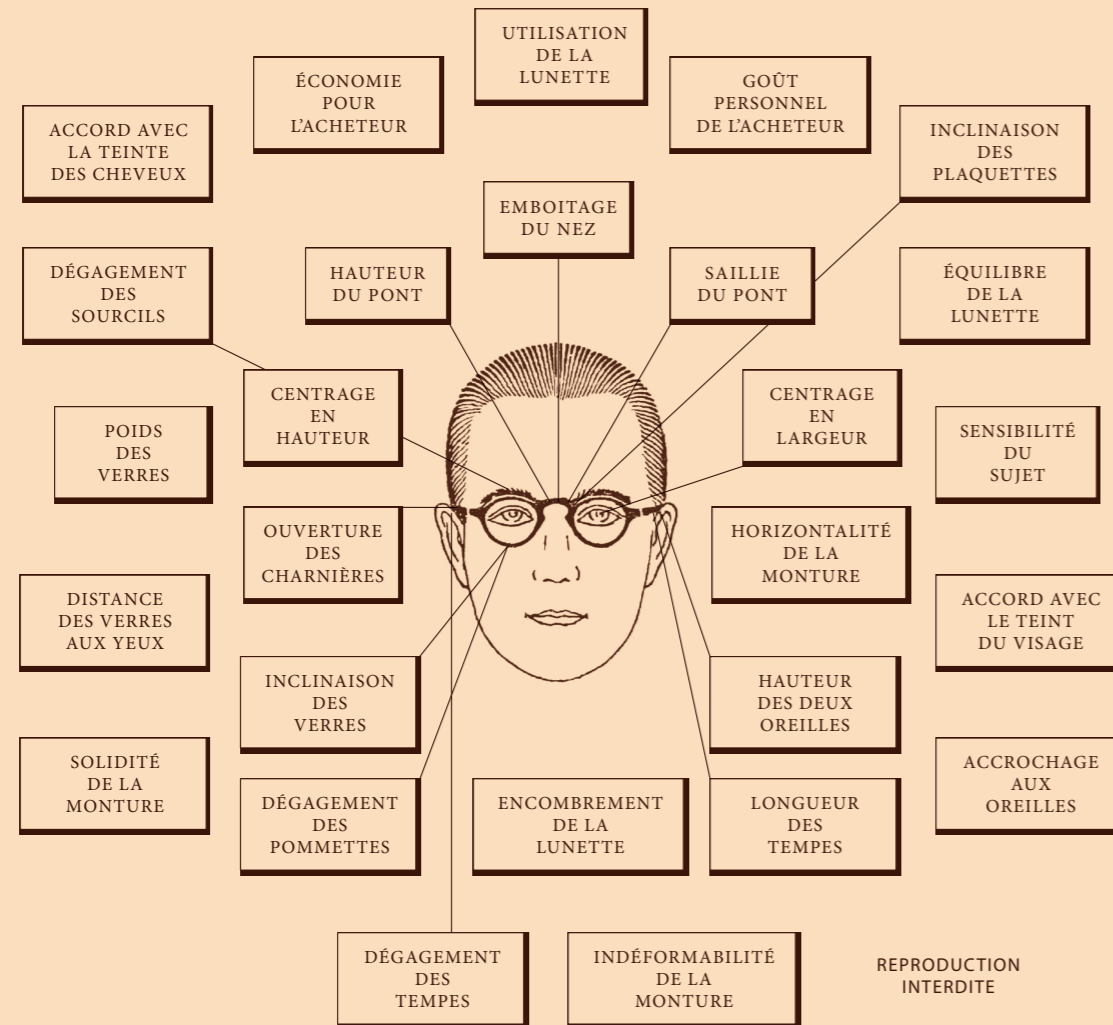
Méline, a fifth-generation member of the Bonnet family, grew up in the workshops, immersed in the world of artisanal eyewear. Eager to continue this family tradition, she decided to join the team at L'Ingénieur Chevallier. Now embarking on her optical training, she is learning both technical skills and the art of sales with the energy and passion that distinguish exceptional artisans. Méline represents, with freshness and enthusiasm, the next chapter of a heritage that beautifully combines tradition and modernity.

**PIERRE
CHAUMON**
Chef d'atelier

From the outset, Pierre Chaumon chose to train in the various facets of the optical business, from sales to design and paramedical work.

Franck Bonnet spotted this passionate young man and decided to integrate him into the L'Ingénieur Chevallier team, where he shares his expertise and inventiveness as workshop manager.

SERVICE ET MANUFACTURE DE LUNETTES



CE QUE NOUS CONSIDÉRONS SANS
QUE VOUS LE SACHIEZ.

L'INGÉNIEUR CHEVALLIER
1740

CONTACT

PYRAMIDES

17, RUE DES PYRAMIDES PARIS 1^{ER}

PYRAMIDES@INGENIEURCHEVALLIER.COM

+ 33 1 42 60 74 64

The historic address! In the heart of Paris,
between
the Louvre and the Opera. Burnished lacquer
vitrines
for a "mirrorless mirror" effect, a bright and warm
interior,
an ultra-modern optometry department, and

WWW.INGENIEURCHEVALLIER.COM



@ingenieurchevallier



@ingenieurchevallier

