


Henrike Stahl

Urban exhibition
Grand Parc de Bordeaux
– Summer 2024



INSTANTS
A Château Palmer & Leica Residency

PRESS KIT

A close-up photograph of a hand holding a white flower bud. The bud is partially open, revealing a yellow stamen. The background is a solid, textured blue. The lighting is soft, highlighting the delicate texture of the petals and the green stem.

“At Château Palmer, I naturally came across young people from the Grand Parc neighborhood in nearby Bordeaux, who had been trained in vineyard work. I took photographs of them, observing their learned movements and techniques. One of the first things that struck me when I arrived was how many novices work with the earth, supervised by more experienced winemakers.

I soon realized just how much this act of transmission was part of an overall philosophy. Château Palmer doesn't just make wine; it helps others to grow. It gives young people a chance; it believes in the power of learning.

The kids here are buds, and my role is to capture them as they blossom.”

— Henrike Stahl



URBAN EXHIBITION THE GRAND PARC NEIGHBORHOOD *BORDEAUX, SUMMER 2024*

In 2023, photographer **HENRIKE STAHL** was chosen to interpret the terroir of an iconic grand cru on Bordeaux's left bank as part of the **INSTANTS** photographic residency – an artistic partnership launched by **CHÂTEAU PALMER** and the legendary **LEICA** camera brand.

Over almost a year, Henrike Stahl captured the winemakers' work from her own sensitive perspective. During the spring, she followed the young seasonal workers in the vineyard, mostly from the **GRAND PARC** neighborhood of Bordeaux, observing techniques passed down and bonds forged.

Her work led to an exhibition in Paris in spring 2024, as well as the publication of an art book, *L'arc sera parmi les nuages* (The bow shall be in the clouds). Driven by a fundamental need to make her work accessible to those featured in it, Henrike Stahl has also decided to display the fruits of her residency in the heart of the Grand Parc neighborhood, with an exhibition whose staging and format was developed with the local inhabitants.

This unprecedented exhibition will be showing from June 3 to September 22, 2024.

Henrike Stahl

“I like working with living matter, focusing on the tactile aspect of photography. I try to develop projects rooted in the lives of normal people. I prefer it when my images move, breathe, and spin as if reflecting the viewer. If I ever have to set up photographs, I like to organize them into diptychs that create omissions and electroshocks. That’s how I tell stories.”

— Henrike Stahl



Born in Germany in 1980 and now based in the north of France, in the Hauts-de-France region, Henrike Stahl works in sectors ranging from fashion to the press. She first made a name for herself with a magnificent photo series about a young rider from the “93” (the nickname for the Seine-Saint-Denis département outside the French capital), traveling through the town of Montreuil wearing a motorcycle helmet. This image broke with the stereotypes so often associated with this Parisian suburb.

Henrike Stahl has turned the margins and the in-betweens into a language. She is German, and for a long time shifted back and forth from Paris to Berlin, refusing to call a single place home. She adopts an insolent perspective, both raw and delicate, when observing territories and identities in transition. For her, photography is a way of creating a dialogue, of building bridges between worlds that periphery and prejudice tend to keep apart. It is a way of bringing people together, breaking down walls, and paving new paths of thought.

Henrike Stahl’s writing is striking in both its power and lightness, its benevolence and harsh beauty, and through this medium she explores other ways of inhabiting photography: eliminating frames, maximizing formats, spreading them out in space to move more easily between prints. Bringing the margin to the center of focus is not just a metaphor for this photographer of all things gentle. For her, plurality is a promise of richness.

The bow shall be in the clouds

As part of her residency, Henrike Stahl visited Château Palmer five times between January and October 2023. Her meeting with the young seasonal workers from the Grand Parc neighborhood in Bordeaux, who are assigned to the vineyards each year for springtime work, was decisive.

“According to the story of Noah, after the flood God makes a rainbow appear as a sign of his pact with mankind, a symbol of peace, hope, and renewal. I didn’t intend these photos to be a biblical allegory, but when I looked at them something resonated with this story, the idea of preserving certain beautiful things for the future.”

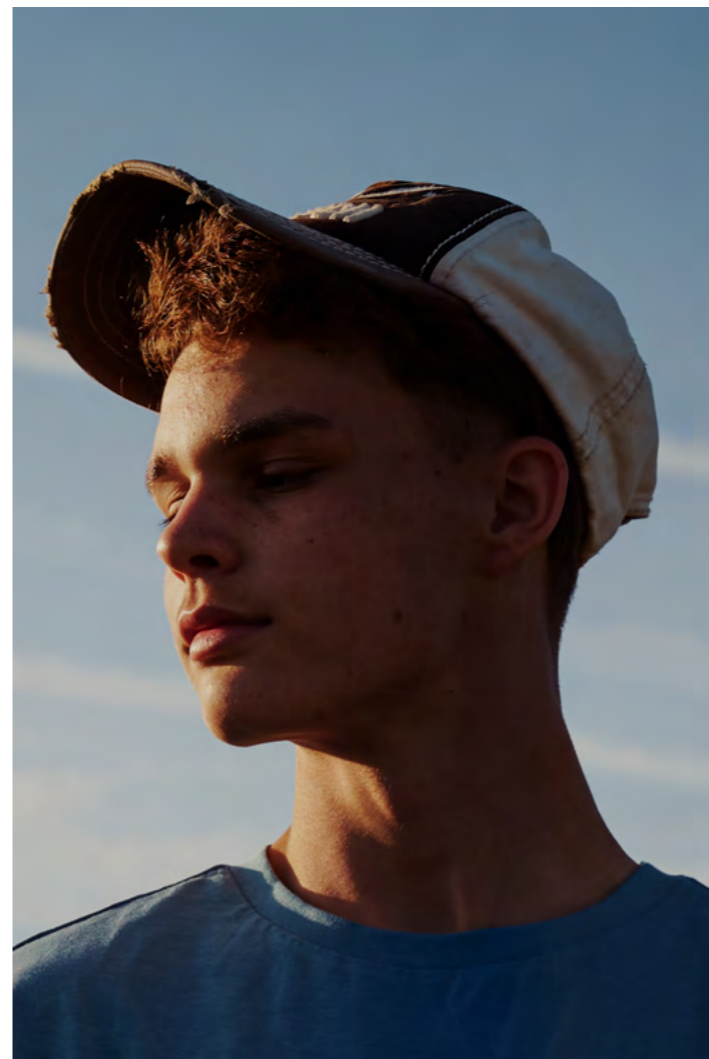


“A young man holds up a leaf, much like the bird that brought Noah a branch to show that the flood was over. This single image could sum up my residence while also spelling out its conclusion: We cannot save the world alone, each in our individual corners, limited to our own knowledge. Our minds must be shared, propagated. We have to listen to our instincts, putting our trust in other beings, in kindness; connecting, weaving, sowing together, intuitively saving what can still be saved. Perceiving the power of the elements, the blood of the earth that flows underfoot. Understanding that, from one end of the world to the other, we are bound by the water of the skies and of the tides. We must take a risk, gambling on harmony instead of the abyss.

Whether working with the earth, with nature, today, or raising children with an eye on the future, a single thought crosses our minds each morning: Will this last? How can we care for our environment? By setting which bow? By building which ark? And from which seeds?

I would like to keep these faces, these moments, slipping them into a bottle to be stored in the château’s cellar for ever and ever. And in doing so, pass on a note of hope to future generations.”

— Henrike Stahl





In Henrike Stahl's work, the edges reach back to the center while dialogues intertwine. The town overflows into the countryside, the fields become radiant cities. Individuals move around, breaking down barriers and inventing the collective.

Faced with the climate crisis, it is becoming increasingly urgent to form alliances and collaborate; to fight in the same way that we dance. Here, the winegrowers seem to have crossed every border to build an ark on the banks of the Gironde estuary where they carry out their vast harvest. They form a small portion of humanity – perhaps the few who will save it.

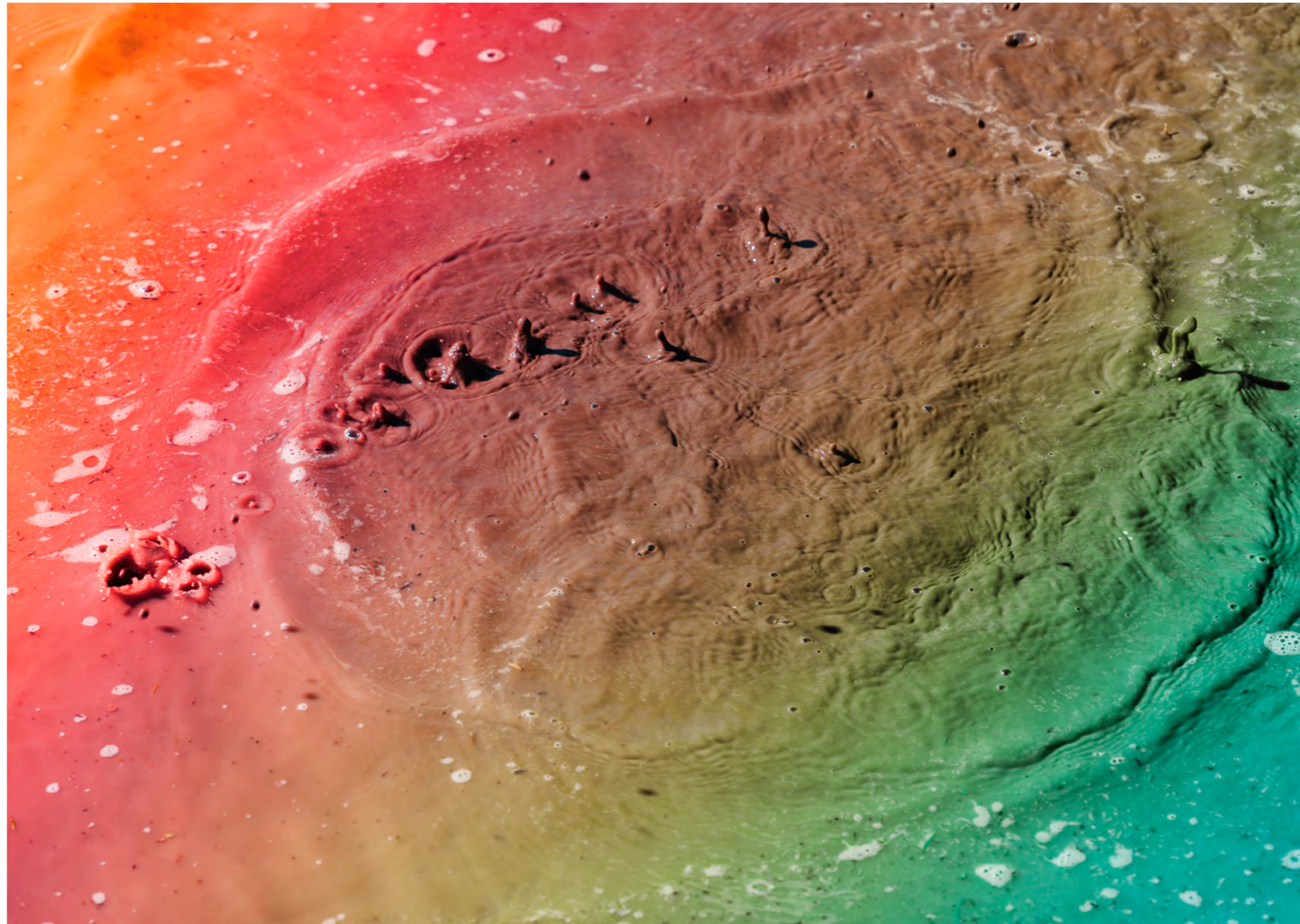
Photographer Henrike Stahl naturally watches for signs that soothe the world: Strong, willing arms, flowers, the spaces in-between; hands that touch, that grasp; abundant matter that throbs, rumbles, or restores life; horns, horsehair, follicles, water transformed into foam or wine.

She draws on an ocean of subjects, reconciles opposites through contrasts and diptychs, creates associations and connections in much the same way that Noah saved species in pairs. She captures the things that weave their way among beings and plants, before letting her visions flourish.

The delicacy of her gaze is so precious. A light among the clouds, a bridge towards others and into the unknown, gracefully summoning those who inhabit the earth.

— Erwan Desplanques





The Younus Academy

Founded in 2012 by Abdoulaye Ndiaye, the **YOUNUS ACADEMY** is an apolitical, non-denominational charity registered under the French law of 1901, based in the Grand Parc neighborhood of Bordeaux and the Grande Borne neighborhood in Grigny. Its mission is to offer each young person the opportunity to become a fulfilled, independent, socially committed adult through a range of projects combining sports, educational, and cultural activities.

As part of its program for professional integration, the Younus Academy has been working in partnership with Château Palmer since 2021. Each spring, the estate reorganizes itself to welcome around 50 young men and women from the Grand Parc neighborhood of Bordeaux during the period of canopy management. Supervised by referent winemakers, they spend a month outdoors, leaf thinning, disbudding, vine braiding, and sharing day-to-day life with the teams.

Henrike Stahl followed them during their first week at Château Palmer. She observed the techniques and methods passed down to them, the meeting of personalities that learned to understand each other, and the nascent ties that became strong bonds.



“Our partnership with Château Palmer has a special place in our organization. It is quite unique in its scope, mobilizing some 50 young people every year. Now in its fourth year, our shared project has developed a certain renown across the neighborhood, and we have no trouble finding willing members from the academy and those who gravitate around it. A core group of young people come back year after year and renew the experience. Overall, the event is a real success.”

— Marie Lefèvre, Development Manager, Younus Academy

“Being in contact with nature, with plants and living things, inspires them to ask so many questions. The young people are interested and curious, and as the days go by, you can feel the group becoming calmer as they carry out jobs relating to canopy management. It is extremely gratifying. They are very endearing, and there are often tears on the last day when we say goodbye to them – both on our side and theirs.”

— Sabrina Pernet, Technical Director, Château Palmer

The Grand Parc neighborhood in Bordeaux

“It was important for this exhibition to be held in the local neighborhood, without barriers, in an open, inclusive, non-intimidating venue. At the same time, it had to be set up in a very delicate way, so as not to ‘display’ or ‘exhibit’ the subjects but simply to nudge these young people into the spotlight.”

— Henrike Stahl



Le Grand Parc, built in the 1960s, is a unique neighborhood in the heart of Bordeaux, connecting the historical center with the northern areas of the city. It is home to almost 11,000 residents, mostly living in large housing estates around a 25-acre park – the third largest in the Bordeaux metropolitan area. The neighborhood offers a landscape of contrasts in which concrete monoliths stand side by side with meadows, children’s play areas, and public gardens. Set within a UNESCO World Heritage Site and benefiting from high-priority district status, it is currently the focus of a vast urban renewal project piloted by Bordeaux Métropole and the City of Bordeaux.

Le Grand Parc is home to a wealth of infrastructures and facilities combined with strong social and charitable ties, which are set to develop and become even more integrated into the heart of the city.



“When I was asked where I’d ideally like to exhibit these photos, I never imagined them in a museum or at a photography fair. Instead, I wanted to bring all that nature, the setting in which my subjects grew as seasonal vineyard workers, right back to their home neighborhood.”

— Henrike Stahl

The idea of exhibiting photos in the center of the Grand Parc neighborhood stems from a fundamental need to make the fruits of the residency accessible to all those involved and featured in it, as well as to thank those who have lent their images, words, and kindness to the project. The portraits of the seasonal workers will be printed in a variety of medium and large formats, including on majestic canvases stretched across building facades, as banners fluttering in the wind hung on lampposts, and on the aptly-named “Rainbow Residence”, which will be restored in bright colors.

At the end of her residency at Château Palmer, Henrike Stahl led a workshop with young people from Grand Parc, encouraging them to get involved in the exhibition and play an active part in its staging and development. From June onwards, the exhibition will be presented as a free, open-air walk through the neighborhood.

Practical informations

Urban exhibition

From June 3 to September 22, 2024

Press days

June 12 and 13, 2024, attended by the photographer

Public preview

June 14, 2024, at 6 p.m., attended by the Mayor of Bordeaux, Pierre HURMIC

DISPLAY SITES

Immeubles sur rue, rue Pierre Trebod

City Stade Grand Parc, rue Henri Expert

Parvis de la salle des fêtes, cours de Luze

Centre commercial Europe, place de l'Europe

Résidence Arc-en-ciel, rue Jeanne de Lestonnac

GETTING THERE

Line C on the Bordeaux Tramway

Tram stops: Camille Godard, Emile Counord, Grand Parc

Bus lines: 9, 15, 82

OTHER EXHIBITIONS

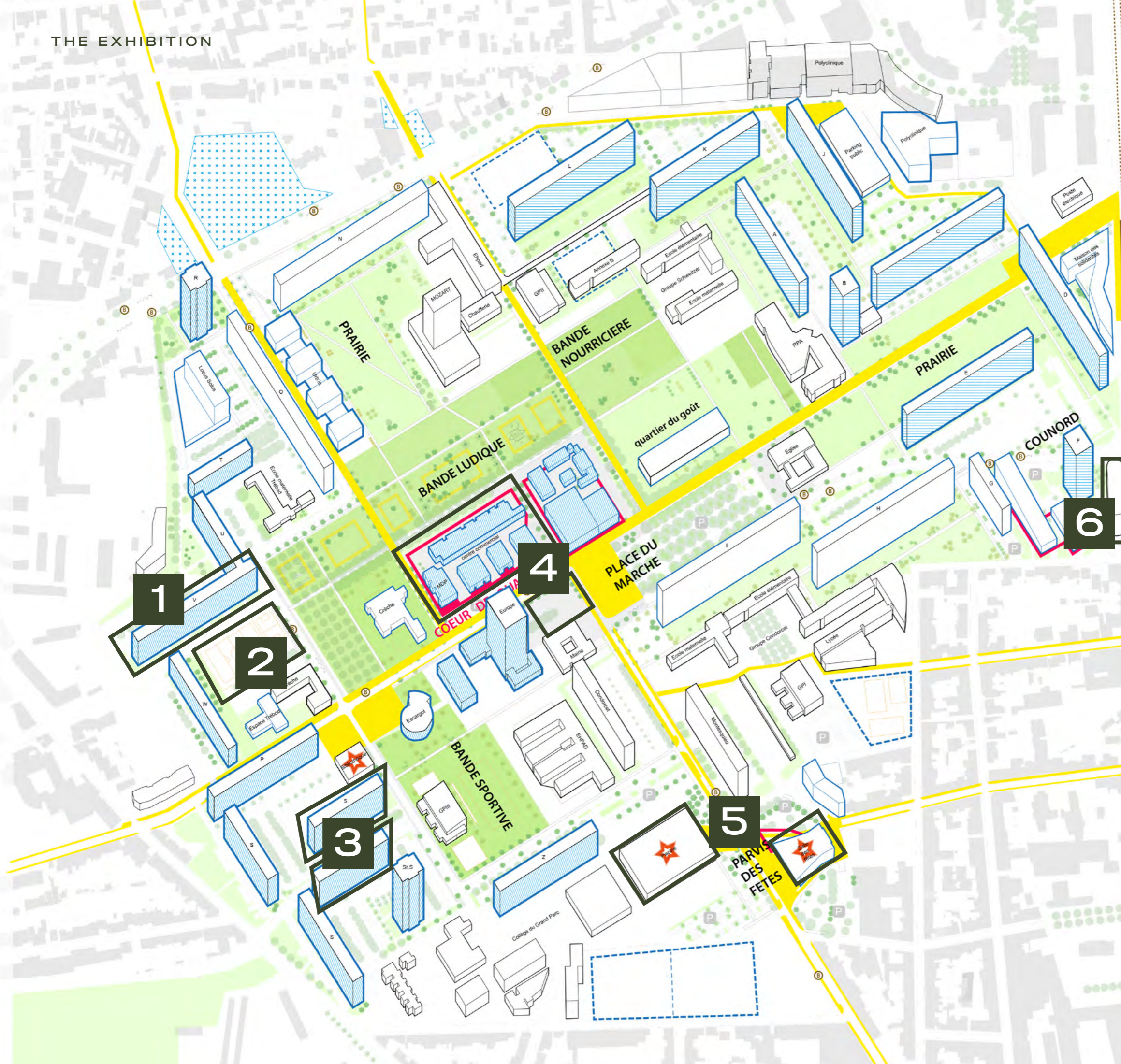
Exhibition at the Leica Store Village Royal

26 Rue Boissy d'Anglas, Paris 8th, from April 5 to June 22, 2024

Publication of an art book from the residency

L'arc sera parmi les nuages, by Éditions Filigranes





ART WALK

- 1
BÂTIMENT V
 Rue Henri Expert
Large-format canvas, 9 x 14 m
- 2
CITY STADE GRAND PARC
 Rue Henri Expert
 (entrance on rue Pierre Trebod)
Hanging banners, 4 projected diptychs
- 3
BÂTIMENTS SCHUBERT & STENDHAL
 Rue Pierre Trebod
 (on the corner of Rue Président Coty)
Large-format canvas, 9 x 14 m
- 4
CENTRE COMMERCIAL EUROPE
 Place de l'Europe
Hanging banners and central column
- 5
PISCINE ET PARVIS DE LA SALLE DES FÊTES
 Cours de Luze
Hanging banners - 2 diptychs on lampposts
- 6
RÉSIDENCE ARC-EN-CIEL
 Rue Jeanne de Lestonnac
Large-format color posters displayed on the building's façade

PARTNERS & SPONSORS



The INSTANTS residency is an artistic adventure through which Château Palmer and Leica are confirming their support for contemporary photographic creation. Each year, the artist-in-residence is given carte blanche to produce a personal work, freely inspired by the estate's ecosystem, vision, values, and territory.

The artist is supported at every stage of his or her research, throughout production and post-production, as well as in the various resulting outputs. These include the publication of an art book by Éditions Filigranes, the production of a three-month exhibition hosted in the Leica Store Village Royal gallery in Paris, and other exhibition formats, according to the artist's inspiration.

Art Photo Projects (Fany Dupêchez and Pascal Michaut) is responsible for the art direction and project management of the INSTANTS residency and its outputs.

www.instants.art

SPONSORS



CHÂTEAU PALMER

As an avant-garde grand cru classé in its field, Château Palmer has built its reputation on the quality of its wines and its pioneering winemaking choices. It is also renowned for its creativity, developed through ambitious artistic collaborations in the worlds of jazz and photography.



LEICA CAMERA FRANCE

Leica Camera France is a subsidiary of the Leica Camera AG group, est. 1869, a German manufacturer of premium cameras and observation equipment with a global reach. Leica's legendary reputation is rooted in a long tradition of excellence and the fame of countless photographers who have championed the brand since 1925.



PANAJOU

Since it was founded in 1865, Panajou has become a pillar of photography in France. First launched by the Panajou brothers, this Bordeaux institution has since become steeped in a rich history and a tradition of unrivalled expertise. Over the decades, led by a team of enthusiasts, Panajou has developed its reputation and become a space for amateurs and professionals to meet.



PUBLIC PARTNERS

The Henrike Stahl exhibition in Grand Parc is sponsored and supported by:



THE CITY OF BORDEAUX

THE CHARTRONS - GRAND PARC - JARDIN PUBLIC DISTRICT TOWN HALL

AQUITANIS - HOME PUBLIC OFFICE OF BORDEAUX MÉTROPOLE





INSTANTS

A Château Palmer & Leica Residency

Press: 2e BUREAU

instants@2e-bureau.com / +33 1 42 33 93 18

Martial Hobeniche / +33 6 08 82 95 33

Marie-René de La Guillonnière / +33 6 88 90 76 22